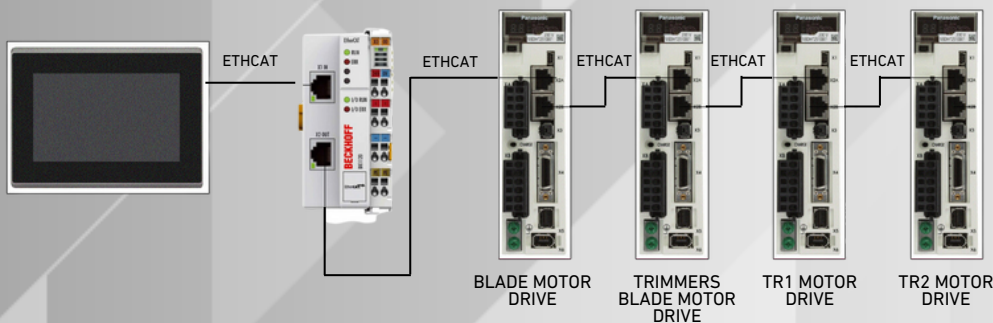




CUTTERS

Handling continuous web

Hardware System



EtherCAT bus architecture

High speed, self-controlled and brand-independent.

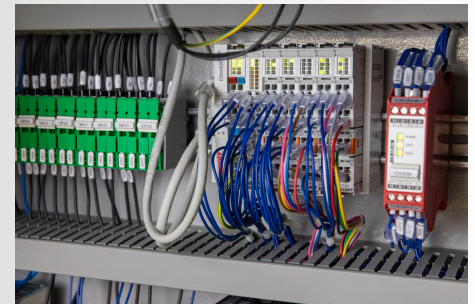


PC based HMI

Controller and human-machine interface (multi-touch panel), with real time kernel, cores isolation and EtherCAT BUS. LAN available for connection to the customer's plant

Remote I/O system

Top brand remote I/O system, high speed, distributed clock, full protection from short circuits.



Motor drives

Compact and powerful motor drives with safety STO.

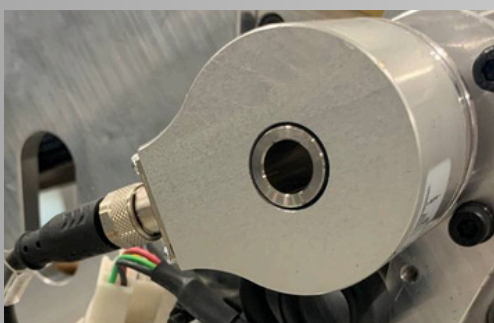
Brushless DC motors

Powerful brushless DC motors, with 23 bit encoder, high speed, high precision and long service life



Optional encoders

For synchronization of the customer's line, additional encoders on the motor of the feeders



MP 602



Data sheet

Basic features



No. of paper streams (web)	2
Speed (cuts/hour)	up to 54 K (27+27)
Min-max paper width	4" - 19"
Paper grammage	50 - 250 gsm
Control unit	PC based control/HMI + EtherCAT bus
Traction	Pinfed or Pinless
Central knife for 2-Up	Opt.
3-blade cutting	Yes, optional: 1/4" - 1/6" - 1/8" - 7,8 mm
Voltage and power	Sph 200 V - 50/60 Hz - 2,3 Kw
Size (overall dimension)	87 x 87 x 117 h



Advanced features

Traction motors	Brushless
Knife-ejector motors	Brushless
Display	7" TFT multi-touch
Language menu	Multilanguage
Log file	Yes - customizable
Operator password	Opt
Parallel Common Interface	Opt
Synchronised merger for 2-Up	Opt - SSU
Shipping dimensions (packaging) (cm)	120 x 100 x 135 h - 200 Kg



Equipped with two separate drive systems, it can alternately process two documents in a continuous strip independently, yet separately, merging them into a single trimming and cross-cutting unit (CEM patent) to perform any interposition cycle under OMR/Barcode control.



07/2024

CEM by **FAST Assembler S.r.l**
Via S. Domenico 11/13 - 20008 Bareggio (MI)
P.IVA e Cod. Fiscale N° 07557690158

info@fastassembler.com
service@fastassembler.com



Contact us 